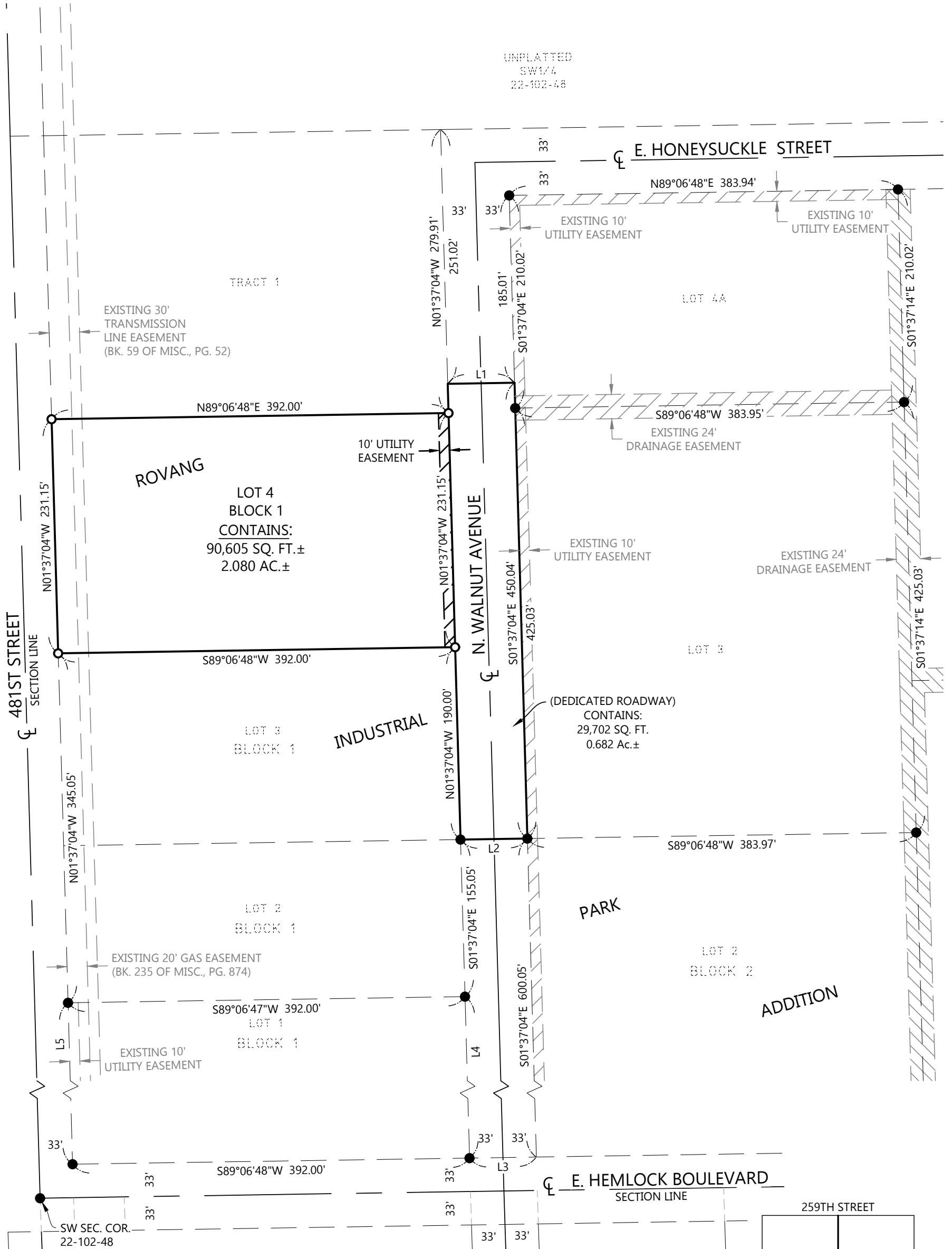


**PLAT OF
LOT 4, BLOCK 1, ROVANG INDUSTRIAL PARK ADDITION
TO THE CITY OF BRANDON, MINNEHAHA COUNTY, SOUTH DAKOTA**

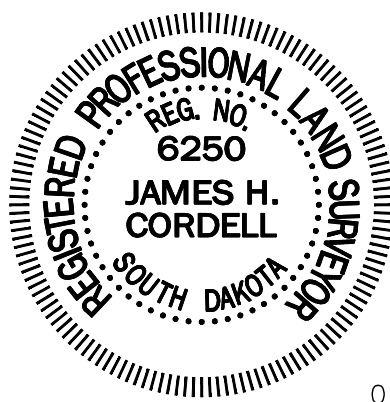


Notes:
The bearing system for this plat is based on the UTM Zone 14 North.

This plat was prepared without the benefit of a title commitment.

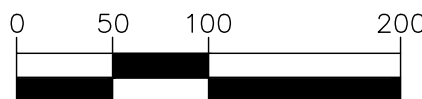
Legend

- - Denotes 5/8 inch by 18 inch rebar set and marked by License No. 6250
- - Denotes found monument

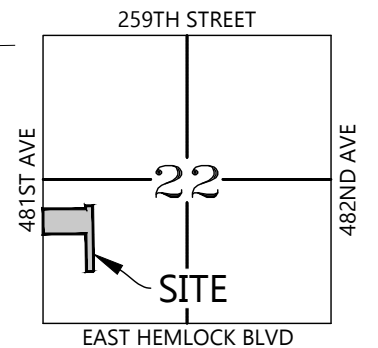


LINE TABLE		
Line #	Bearing	Distance
L1	N89°06'48"E	66.01'
L2	S89°06'48"W	66.01'
L3	S89°06'48"W	66.01'
L4	S01°37'04"E	445.00'
L5	N01°37'04"W	445.00'

GRAPHIC SCALE



(IN FEET)



VICINITY MAP
SECTION 22-102-48

Total Area Surveyed:
2.762 Acres±



216 S. Duluth Avenue • Sioux Falls, SD 57104
Phone: (605) 332-7211 • Fax: (605) 332-7222

Engineers • Surveyors

