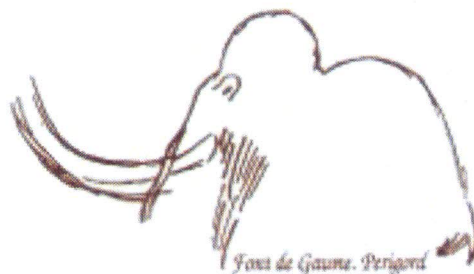


**ARCHEOLOGY LABORATORY  
AUGUSTANA UNIVERSITY**

Dr. L. Adrien Hannus  
Principal Archeologists/Director  
Adrien.hannus@augie.edu

2032 SOUTH GRANGE AVENUE  
SIOUX FALLS, SOUTH DAKOTA 57105  
PHONE  
605-274-5493 · 605-274-5494 · 605-274-5499



November 14, 2018

Dennis E. Olson  
Vice Chairman  
Brandon Development Foundation, Inc.  
P.O. Box 276  
Brandon, SD 57005

**RE: A Letter Report Addressing the Results of a Level III Archeological Evaluation of the Proposed Rovang Industrial Park in the S1/2 of the SW1/4 of Section 22, T102N, R48W, Minnehaha County, South Dakota.**

Dear Mr. Olson,

A Level III cultural resources survey (100 percent intensive pedestrian survey) was conducted in the S1/2 of the SW1/4 of Section 22, T102N, R48W (Figure 1) in Minnehaha County, South Dakota, on November 7, 2018 by Emma L. Behling and Carlie J. Peterson of the Archeology Laboratory, Augustana University, Sioux Falls, South Dakota. The archeological survey was conducted for the Brandon Development Foundation. The project area is to become a Certified Ready Site through the South Dakota Governor's Office of Economic Development program. The project area, as provided by the Brandon Development Foundation, covers approximately 80 acres and is located within the Lower Big Sioux Archaeological Region.

Brian Huot conducted a files search on October 22, 2018 at the South Dakota State Historical Society, Archaeological Research Center (ARC) in Rapid City, South Dakota. No sites or structures have been previously documented in the project Area of Potential Effect (APE). Seven archeological sites have been recorded within one mile of the project area: 39MH0065, 39MH0072, 39MH0139, 39MH0157, 39MH0158, 39MH2000, and 39MH2013 (Figure 1; Appendix A, Table 1). Seven structures have been previously documented within one mile of the project area: MH00000906, MH00000907, MH00000908, MH00000909, MH00000910, MH00001270, and MH00001378 (Figure 1; Appendix A, Table 2). Four bridges have been previously documented within one mile of the project area: MH00000902, MH00001641, MH00001648, and MH00001649 (Figure 1; Appendix A, Table 2). Seventeen archeological surveys were previously conducted within one mile of the project area (Braun 1994; Bray and Kyrola 2017; Byrne 2015; Downing 2001; Gillen et al. 1994; Kogel 2005; Larson 2016; Lueck 2004a, 2004b, 2009; Messerli 2003; Miller 2009; Rom 2002; Vaillancourt 2003; Williams 2013;

Winham 1986, 1998) (Appendix A, Table 3). Relevant historical documents, maps, and atlases were reviewed on November 1, 2018 at the Center for Western Studies, Augustana University (Andreas 1884; Ogle 1903; Peterson 1904; Webb 1917). The USGS 7.5-minute quadrangle map (Brandon, 1962, photorevised 1976) was also examined for potential historic properties. These sources indicated no evidence of structures within the project area.

The Brandon Development Foundation provided project area maps on September 24, 2018. Emma Behling and Carlie Peterson conducted a pedestrian survey of the APE on November 7, 2018, utilizing 20-meter linear transects across the project area. The APE totaled approximately 80 acres. Approximately 60 acres in the southern portion of the APE have been heavily disturbed by partial development and have been reseeded with grass; disturbances to this portion consist of construction of two paved streets and a new railroad spur (built within the last two months), land leveling, and utility trenching (Figures 3-6). The remaining 20 acres in the northern portion of the APE consisted of an agricultural field that had a center pivot irrigation system. The field contained harvested beans and partially harvested corn at the time of the survey. Visibility was approximately 70 percent in the partially developed portion of the APE and approximately 30 percent in the corn and bean fields. One 40-cm-diameter shovel test (ST1) was excavated in the northern portion of the APE in the corn stubble (Figures 2 and 7, Table 1). The soil matrix was screened through ¼-inch wire mesh. No cultural material was observed in the test.

No cultural resources were identified during the pedestrian survey. Based on the landscape setting, extensive landscape alteration, agricultural disturbance, and the negative results of the current survey and subsurface test, it is highly unlikely that the APE contains significant archeological resources eligible for listing in the NRHP. It is recommended that no further archeological work is necessary. The project will not encroach upon, damage, or destroy any historic property that is included in the National or State Register of Historic Places. However, if the proposed construction should uncover cultural material or features, all ground-disturbing activity within the APE should cease and the South Dakota State Historic Preservation Office (SHPO) should be notified. Please note that final recommendations are issued by the SHPO.

Please forward copies of this report as necessary. The copy with the original signature should be forwarded to Paige Olson, Review and Compliance Coordinator, SHPO. Also, please forward one copy to the ARC (Renee Boen). Thank you for the opportunity to work on this project. Should any questions arise, please feel free to contact me at any time.

Sincerely,



L. Adrien Hannus, Principal Investigator

**Addresses:**

*Paige Olson* – ATTN: Review and Compliance Coordinator, South Dakota State Historical Society, Cultural Heritage Center, 900 Governors Drive, Pierre, South Dakota 57501-2217.

Telephone: (605) 773-6004; Fax: (605) 773-6041 - E-mail: [Paige.Olson@state.sd.us](mailto:Paige.Olson@state.sd.us)

*Renee Boen* – State Archaeological Research Center, Box 1257, 217 Kansas City Street, Rapid City, South Dakota 57709-1257. Telephone: (605) 394-1938; Fax: (605) 394-1941 - E-mail: [Renee.Boen@state.sd.us](mailto:Renee.Boen@state.sd.us)

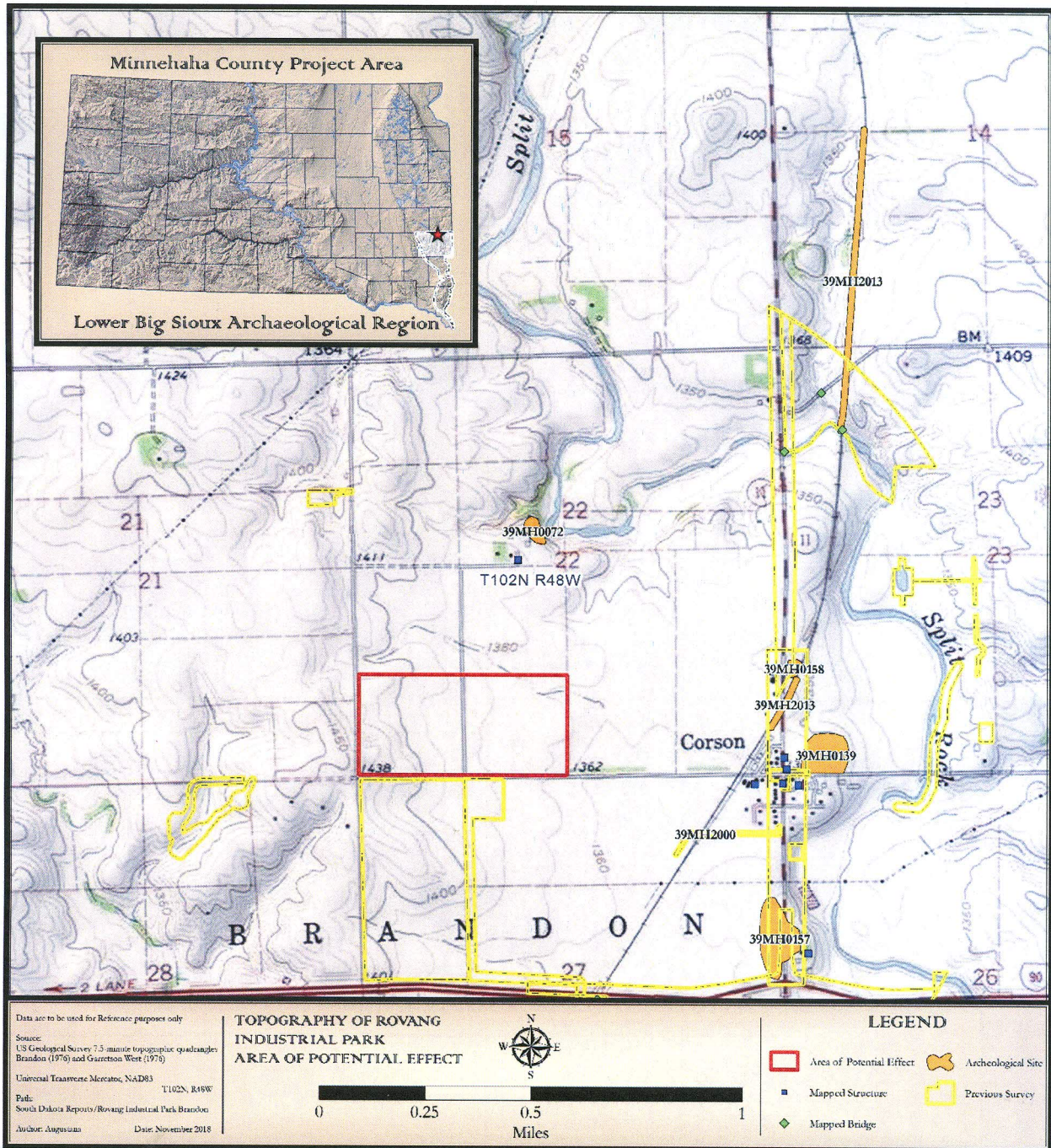


Figure 1. Map of project area and previously recorded surveys, sites, structures and bridges within one mile, Section 22, T102N, R48W (Brandon, 1962, photorevised 1976, USGS 7.5-minute quadrangle).



Figure 2. Satellite imagery of project area depicting ST1 location, Section 22, T102N, R48W.



Figure 3. Overview of APE, facing northeast.



Figure 4. Overview of recently constructed railroad spur in APE, facing north-northeast. It was built in the last two months (Chuck Parsons, Brandon Development Foundation, Inc., personal communication 2018).



Figure 5. Overviews of APE, facing south-southwest, southwest, and west.



Figure 6. Overview of disturbance from culvert and excavated ditch, facing west-northwest.

Table 1. Shovel Test Results.

Depth (cm)	Description	Cultural Material
0-23	Ap, 10YR 2/2 with some 10YR 5/4, clay, mottled and disturbed	No
23-60+	10YR 2/2, clay with some sand and small to medium sized gravel inclusions	No

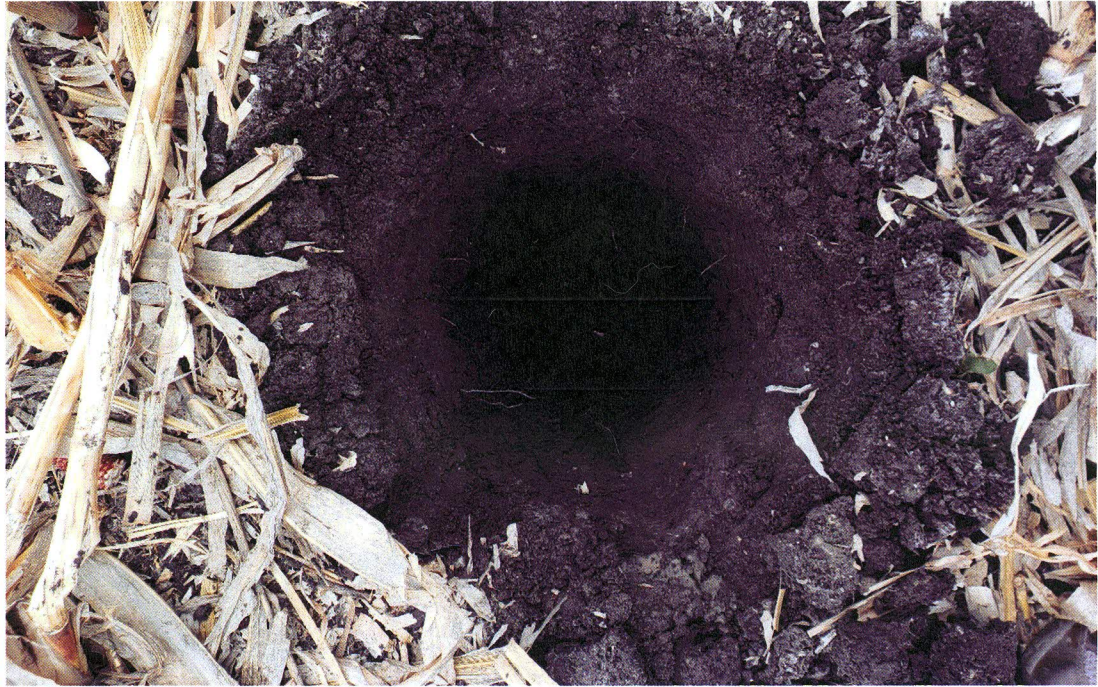


Figure 7. Close up of ST1.

## References Cited

- Andreas, A. T.  
1884 *Andreas's Historical Atlas of Dakota*. A. T. Andreas, Chicago.
- Braun, Kurt  
1994 *An Intensive Cultural Resource Survey on a Highway SD11 from I-90 to the North Side of Corson in Minnehaha County, South Dakota*. SDDOT Project No. P0011(38)80, PCEMS 557H. CIS No.1025. South Dakota State Historical Society, Archaeological Research Center, Rapid City, South Dakota.
- Bray, Madeleine, and Tyler Lund-Kyrola  
2017 *Level III Archaeological Survey for the I-90 Exit 406 Interchange Modification Study*. HP5596(18) 3616 P, IM 0909(46) 3014 N. PCN 4433. HR Green Project No. 50160012: 106 Group Project No. 2171. 106 Group, St. Paul, Minnesota. HR Green, Inc., St. Paul, Minnesota.
- Byrne, Daniel  
2015 *An Intensive Cultural Resources Survey of SDDOT Project IM 0909(81)406, PCN 021X, I-90 Bridge Replacement over Split Rock Creek, Minnehaha County, South Dakota*. CIS No. 2840. South Dakota State Historical Society, Archaeological Research Center, Rapid City, South Dakota.
- Downing, Patricia  
2001 *A Cultural Resources Reconnaissance Survey of a Proposed Cellular Tower Site Near Brandon, T102N, R48W, Section 21 in Minnehaha County, South Dakota*. Project No. 010312001F. Prairie Lakes Archaeological Services, Aberdeen, South Dakota.
- Gillen, Timothy V., E. Lueck, and R. P. Winham  
1994 *An Intensive Cultural Resources Survey of Proposed Sioux Valley Electric Projects in Eastern South Dakota*. Archeological Contract Series No. 97. Archeology Laboratory, Augustana College, Sioux Falls, South Dakota.
- Kogel, Troy  
2005 *A Cultural Resources Survey for a Fiber Optic Corridor, T102N, R48W, Section 27 in Brandon, Minnehaha County, South Dakota*. Archeology Laboratory, Augustana College, Sioux Falls, South Dakota.
- Larson, Jeffrey D.  
2016 *Level III Cultural Resource Inventory of the Concrete Materials Company Corson Quarry Expansion, Minnehaha County, South Dakota*. Project No. SD3916030. Quality Services, Inc., Rapid City, South Dakota.
- Lueck, E.  
2004a *A Reconnaissance Cultural Resources Survey of the Proposed Brandon Industrial Park, T102N, R48W, Section 27, Minnehaha County, South Dakota*. Archeology Laboratory, Augustana College, Sioux Falls, South Dakota.  
2004b *Cultural Resources Survey of Two Proposed Overhead Power Line Projects Near Brandon and Tea, Minnehaha and Lincoln Counties, South Dakota*. Archeology Laboratory, Augustana College, Sioux Falls, South Dakota.



- Lueck, E. (cont.)  
 2009 *A Level III Cultural Resources Survey of the Proposed Corson Water Main, T102N, R48W, Section 27, Minnehaha County, South Dakota.* Archeology Laboratory, Augustana College, Sioux Falls, South Dakota.
- Messerli, Thomas  
 2003 *An Intensive Cultural Resources Survey of SDDOT Small Road Project No. P-PH 0011(05)81, PCEMS 6229, Minnehaha County, South Dakota.* South Dakota State Historical Society, Archaeological Research Center, Rapid City, South Dakota.
- Miller, Paul V.  
 2009 *An Intensive Cultural Resources Survey of SDDOT Emergency Erosion Repair Project PCN 00Z2, for SD Highway 11, Minnehaha County, South Dakota.* CIS No. 2317. South Dakota State Historical Society, Archaeological Research Center, Rapid City, South Dakota.
- Ogle, Geo. A.  
 1903 *Standard Atlas of Minnehaha County, South Dakota.* Geo. A. Ogle & Company Publishers & Engravers, Chicago, Illinois.
- Peterson, E. F.  
 1904 *Historical Atlas of South Dakota.* E. Frank Peterson, Vermillion, South Dakota.
- Rom, Lance  
 2002 *Cultural Resources Inventory East River Electric Power Cooperative, Inc.'s Corson Substation & Transmission Line, Minnehaha County, South Dakota.* Project No. 030502. Quality Services, Inc., Rapid City, South Dakota.
- Vaillancourt, Dana R.  
 2003 *A Level III Cultural Resource Letter Report for a Surface Pipeline and Cross Fencing Project for Jarrod Johnson, T102N, R48W, Section 23, Minnehaha County, South Dakota. Project No. MI2003-01.* National Resources Conservation Service (NRCS), U.S. Department of Agriculture, Huron, South Dakota.
- Webb Publishing  
 1917 *Atlas and Farmers Directory of Minnehaha County, South Dakota.* Webb Publishing Co., St. Paul, Minnesota.
- Williams, Barry G.  
 2013 *Cory Hansen Pipeline and Pond: A Level III Survey in Minnehaha County, South Dakota. T102N, R48W, Section 28.* U.S. Fish and Wildlife Service, Region 6, Bismarck, North Dakota.
- Winham, R. Peter  
 1986 *An Intensive Cultural Resource Survey of a Proposed Quarry Area Near Corson, in Minnehaha County, South Dakota.* Archeology Laboratory, Augustana College, Sioux Falls, South Dakota.
- 1998 *Cultural Resources Survey of a Portion of the Burkman Industrial Park for the City of Brandon, Minnehaha County, South Dakota, Lower Big Sioux Archeological Region.* Archeology Laboratory, Augustana College, Sioux Falls, South Dakota.

## Appendix A

**Table 1. Previously Recorded Sites within One Mile of the Project Area.**

Site No.	Description	Eligibility
39MH0065	native american stone circle	Unevaluated
39MH0072	native american artifact scatter	Unevaluated
39MH0139	native american artifact scatter	Unevaluated
39MH0157	native american artifact scatter	Unevaluated
39MH0158	native american artifact scatter	Unevaluated
39MH2000	railroad	Eligible
39MH2013	railroad	Eligible

**Table 2. Previously Recorded Bridges and Structures within One Mile of the Project Area.**

<b>Bridge</b>	
SHPO ID	Eligibility
MH00000902	NR Eligible
MH00001641	Not Eligible
MH00001648	Not Eligible
MH00001649	Not Eligible

<b>Structures</b>	
SHPO ID	Eligibility
MH00000906	NR Eligible
MH00000907	NR Eligible
MH00000908	Not Eligible
MH00000909	Not Eligible
MH00000910	NR Eligible
MH00001270	NR Eligible
MH00001378	NR Eligible

**Table 3. Previously Recorded Surveys within One Mile of the Project Area.**

Archive No	Author(s)	Year	Report Title
AMH-0018	Winham, R. Peter	1986	An Intensive Cultural Resource Survey of a Proposed Quarry Area Near Corson, in Minnehaha County, South Dakota
AMH-0108	Braun, Kurt	1994	An Intensive Cultural Resource Survey on a Highway SD11 from I-90 to the North Side of Corson in Minnehaha County, South Dakota. SDDOT Project No. P0011(38)80, PCEMS 557H. CIS No. 1025
AMH-0123	Winham, R. Peter	1998	Cultural Resources Survey of a Portion of the Burkman Industrial Park for the City of Brandon, Minnehaha County, South Dakota, Lower Big Sioux Archeological Region. Project No. 980219001F
AMH-0146	Downing, Patricia	2001	A Cultural Resources Reconnaissance Survey of a Proposed Cellular Tower Site Near Brandon, T102N, R48W, Section 21 in Minnehaha County, South Dakota. Project No. 010312001F
AMH-0153	Rom, Lance	2002	Cultural Resources Inventory East River Electric Power Cooperative, Inc.'s Corson Substation & Transmission Line, Minnehaha County, South Dakota. Project No. 030502
AMH-0165	Vaillancourt, Dana R.	2003	A Level III Cultural Resource Letter Report for a Surface Pipeline and Cross Fencing Project for Jarrod Johnson, T102N, R48W, Section 23, Minnehaha County, South Dakota. Project No. MI2003-01
AMH-0177	Lueck, Edward	2004	A Reconnaissance Cultural Resources Survey of the Proposed Brandon Industrial Park, T102N, R48W, Section 27, Minnehaha County, South Dakota
AMH-0179	Messerli, Thomas	2003	An Intensive Cultural Resources Survey of SDDOT Small Road Project No. P-PH 0011(05)81, PCEMS 6229, Minnehaha County, South Dakota. CIS No. 1691
AMH-0190	Kogel, Troy	2005	A Cultural Resources Survey for a Fiber Optic Corridor, T102N, R48W, Section 27 in Brandon, Minnehaha County, South Dakota

**Table 3 con't. Previously Recorded Surveys within One Mile of the Project Area.**

AMH-0265	Miller, Paul V.	2009	An Intensive Cultural Resources Survey for SDDOT Emergency Erosion Repair Project PCN 00Z2, for SD Highway 11, Minnehaha County, South Dakota. CIS No. 2317
AMH-0266	Lueck, Edward	2009	A Level III Cultural Resources Survey of the Proposed Corson Water Main, T102N, R48W, Section 27, Minnehaha County, South Dakota
AMH-0339	Williams, Barry G.	2013	Cory Hansen Pipeline and Pond: A Level III Survey in Minnehaha County, South Dakota. T102N, R48W, Section 28
AMH-0345	Byrne, Daniel	2015	An Intensive Cultural Resources Survey of SDDOT Project IM 0909(81)406, PCN 021X, I-90 Bridge Replacement over Split Rock Creek, Minnehaha County, South Dakota. CIS No. 2840
AMH-0374	Larson, Jeffrey D., edited by Lance Rom	2016	Level III Cultural Resource Inventory of the Concrete Materials Company Corson Quarry Expansion, Minnehaha County, South Dakota. Project No. SD3916030
AMH-0392	Bray, Madeline, and Tyler Lund-Kylora	2017	Level III Archaeological Survey for the I-90 Exit 406 Interchange Modification Study. HP5596(18) 3616 P, IM 0909(46)406 3014 N. PCN 4433. HR Green Project No. 50160012 : 106 Group Project No. 2171
ESD-0154	Gillen, Timothy V., Edward Lueck and R. Peter Winham	1994	An Intensive Cultural Resources Survey of Proposed Sioux Valley Electric Projects in Eastern South Dakota. Archeological Contract Series No. 97
ESD-0326	Lueck, Edward	2004	Cultural Resources Survey of Two Proposed Overhead Power Line Projects Near Brandon and Tea, Minnehaha and Lincoln Counties, South Dakota